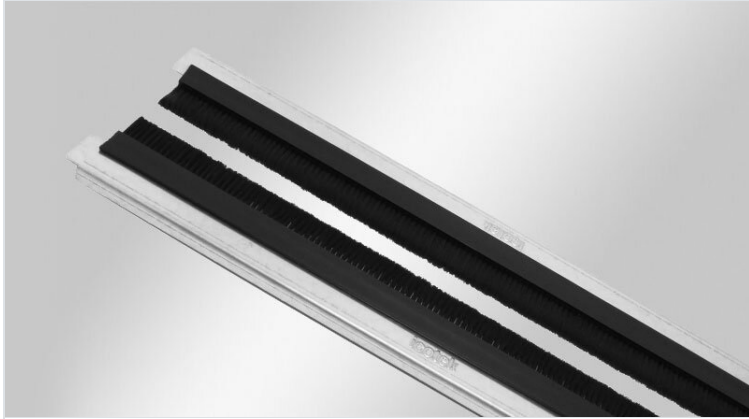


KDR-BES split gland plates with brush grommets

for Rittal TS 8 enclosures



The new 2-piece enclosure gland plates KDR-BES-TS8 are supplied with preassembled brush grommets.

The gland plates are installed with standard Rittal clips.

Depending on the maximum cable diameter to be routed, the 2 halves of the brush gland plate are aligned further or closer to each other.

The gland plates KDR-BES-TS8 are perfect for protection of the enclosure interior against dirt.

RoHS
compliant

REACH
COMPLIANCE

Made in
Germany

Specifications

Material	Base plate: Steel, zinc plated Brushes: Polyamide
Operating temperature	-20 C° to 90 C°
Properties	silicone free, halogen free

Advantages & benefits

- During assembly, almost the complete base of the enclosure can be used for installation of cables
- Subsequent assembly possible

Product types & sizes

KDR-BES-TS8-600-58000



Part No.	58000	Sight size of	435 mm
EAN	4251269315	base opening	
	787	Suitable for	Rittal TS 8
Package quantity	1	enclosure	
Length	458 mm		
Width	125 mm		
Height	16 mm		
For enclosure width	600 mm		

KDR-BES-TS8-800-58006



Part No.	58006	Sight size of	635 mm
EAN	4251269315	base opening	
	794	Suitable for	Rittal TS 8
Package	1	enclosure	
quantity			
Length	658 mm		
Width	125 mm		
Height	16 mm		
For enclosure	800 mm		
width			

KDR-BES-TS8-1000-58012



Part No.	58012	Sight size of	835 mm
EAN	4251269315	base opening	
	800	Division bar	no
Package	1	Suitable for	Rittal TS 8
quantity		enclosure	
Length	858 mm		
Width	125 mm		
Height	16 mm		
For enclosure	1.000 mm		
width			

Part No.	58018	Sight size of	495 mm
EAN	4251269315	base opening	
	817	Suitable for	Rittal TS 8
Package quantity	1	enclosure	
Length	518 mm		
Width	125 mm		
Height	16 mm		
For enclosure width	1.200 mm		

